

**INTRODUCTION OF MIROS  
[AAI SUMMIT]**

**26 NOVEMBER 2012**

# **MALAYSIAN INSTITUTE OF ROAD SAFETY RESEARCH**

Established on 3rd January 2007, MIROS functions as a one-stop centre for the generation and dissemination of road safety information through the print media and a concerted training programme.

MIROS carries out studies and evaluates current procedures on road safety to generate information that will form the core of its evidence-based intervention programmes to enhance road safety.

## **Vision**

To emerge as a world leader in road safety research

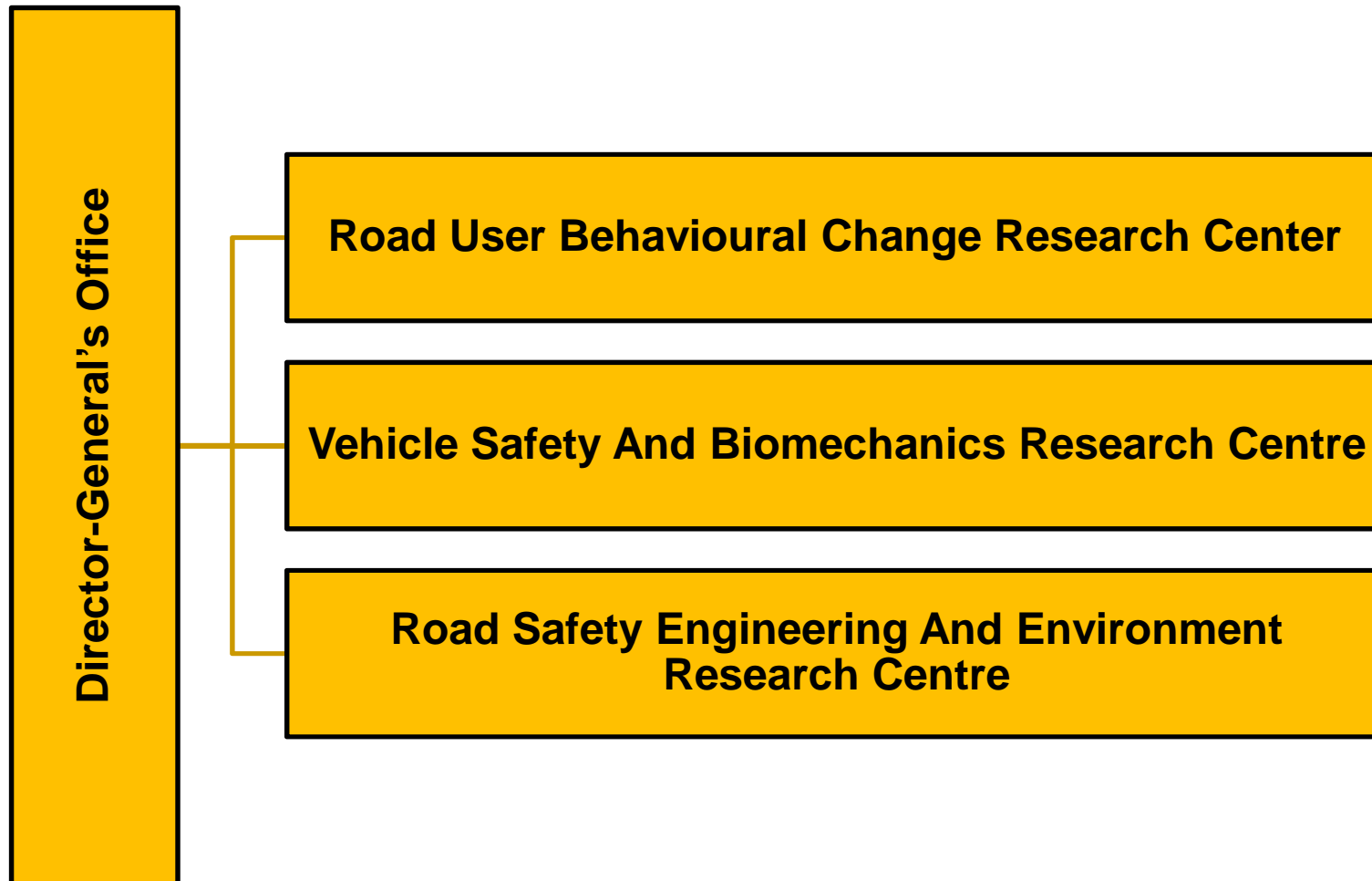
## **Mission**

To foster the science and art of road safety interventions

# FUNCTION

- Conduct high impact research that will be translated into road safety policies.
- Develop national objectives, policies, and priorities for the orderly development and administration of road safety research.
- Enhance and increase knowledge based on new developments in issues related to road safety.
- Serve as an audit and accreditation agency in curriculum design and standards on road safety.
- Propose evidenced based cost-effective interventions/ programmes.
- Serve as a repository of knowledge and linkage on road safety.
- Serve as a centre providing consultation and advice on road safety issues.

# RESEARCH CENTRES





# ROAD USER BEHAVIOURAL CHANGE RESEARCH CENTER

This Centre will undertake several task to effect road user behavioural change:

- Develop the national Road User Assessment Programme (RUAP)
- Undertake research on the effectiveness of road safety campaigns and enforcement
- Undertake research on psychology of road user behaviour
- Assess the effectiveness of road safety education
- Design research instruments for effectiveness behavioural research
- Undertake research on the effectiveness of traffic calming measures on road users
- Undertake research on the sociology of transport
- Develop a national accident costing index
- Provide consultation services on road users
- Establish linkages with national and international road safety research bodies
- Oversee and accredit driving institutes nationwide



# VEHICLE SAFETY AND BIOMECHANICS RESEARCH CENTRE

This Centre is tasked with the following:

- Undertake research on trauma care, post injury treatment, emergency response and pre- and post-crash medical fitness
- Review policies and current approach towards improving Standard Operating Procedures, Code of Practice and Industrial Standard through Technical Reports, Recommendations, and Science and Technical Publications
- Carry out crashworthiness investigation mechanics of injury, bio-mechanics and human tolerance to crash
- Reconstruct injury related crashes
- Carry out validation tests on the impact of road accidents
- Undertake computer-aided engineering analysis
- Initiate safe practice in technical management of transportation
- Provide technical and management consultation services
- Monitor and audit implementation of SHE



# **ROAD SAFETY ENGINEERING AND ENVIRONMENT RESEARCH CENTRE**

This Centre will serve as the accident database for the national and will undertake the following task:

- Provide for a continuously update national accident and injury database
- Map accident data using geographical code, RUM accident code and digital code
- Undertake diagnostic analysis on road accident and assessment of safety interventions
- Undertake research on safer road design and road environment
- Develop models on traffic and transpiration facilities
- Develop national fatality index
- Design suitable methods to control exposure to road accidents
- Undertake annual vehicle survey to assess Vehicle Kilometer Travelled (VKT) and passenger Kilometer Travelled (PKT) rates



# RESEARCH TRANSLATED INTO POLICIES

Compliance to UNECE Regulations

Enhancing Guardrail Standards

Code of Practice on Safety, Health and Environment for Transportation Sector

Implementation of New Driving Training Curriculum Based on Learning Outcomes

Implementation of Rear Seatbelt Use

Implementation of Road Safety Education in School

Implementation of Community Based Programmed on Safety Helmet

Electric Bicycle



# MAIN PROJECTS & RESEARCH

